

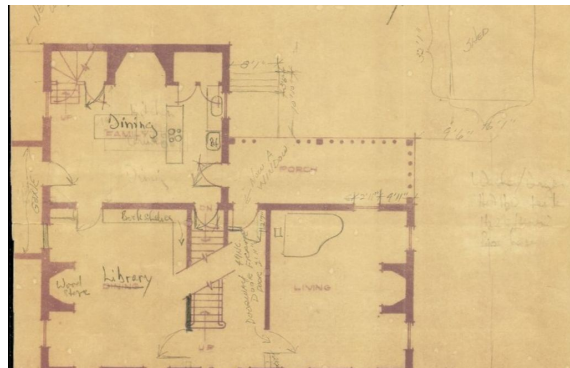
"Rhoneymeade inspires personal and community connection through the exploration of nature, history, art, and diverse landscapes."

Barn Quilts



The Rhoneymeade welcome center and gallery space was closed this year. Instead, it was transformed into the ideal work space to scale up and paint the winning barn quilt designs. Volunteer **Katie Molinengo** (pictured) spearheaded the project and diligently finished the murals. She included volunteer help, worked during the heat and in the cold, and had to constantly adjust the provided color mixes to remain faithful to the artists' designs. **Amber Wiewel's** 'Seasons of Rhoneymeade', and **Jessie Aller's** 'Delectable Mountains' - the fully painted winning quilt designs - will be hung on the Rhoneymeade barn in the coming months with substantial help from a local equipment rental company. We will share an announcement.

1853 Rhone House



Last fall, **Gil Morrison** completed a Fenestration and Egress Survey on the Historic Register Rhone House. Determining that at least 8 window frames needed restoration, he tapped **Joe Kunst** (pictured) to stabilize them by removing rot and installing shields until proper repairs can be made summer 2021. This marks the beginning of a new era of restoration on the house, starting with the frames and glazing, painting, shutters, and hardware. Wonderfully, Gil and

Joe worked on the house in 1984 and we thank them for returning to the 'Old Rhone Homestead' to volunteer their skills and experience. Joe is also digitizing house blueprints in Autocad to serve as a communication tool.

Heritage Farm Trail



Rhoneymeade experienced an uptick in visitors this year. Some explored the 2-mile trail which had its soft opening last April. Traversing a diverse landscape of farm, field, and forest, the trail uses a high, clear farm lane, wooded stagecoach and railroad bed relics, woodland footpath, and a windy lane. Stay tuned - in 2021,

it will form the basis for Trail Tenders activities and a year round birding program.

Volunteers and Support



Many hands helped keep Rhoneymeade in shape this year for the public. We would like to particularly thank Jackie Bonomo, Ken Hubregsen, and Kathy Weaver for regular on site help. If you would like to volunteer a few hours a week

on site, please contact us.

Rhoneymeade exists thanks to Agriculture, the Rhoneymeade Fund at Centre Foundation, grants, and generous support from individuals during Centre Gives, and through memberships, contributions, and donations. You, too, can help by making an end-of-year contribution to Rhoneymeade.

Volunteer

Support Us

Copyright © 2020 Rhoneymeade Inc, All rights reserved.

Want to change how you receive these emails?
You can update your preferences or unsubscribe from this list.

